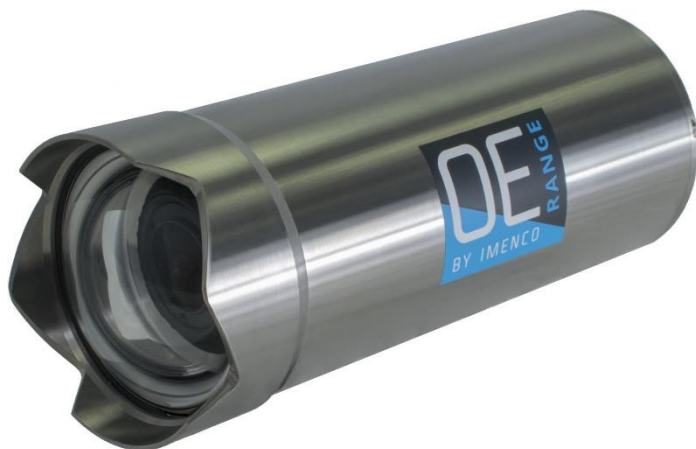


## Applications

- Mid-Water Navigation Tasks
- General Observation & Situational Awareness
- Drill Support Tasks
- Manipulator & Tooling Tasks

# OE15-100F/101F



## High Resolution Enhanced Monochrome CCD Camera

- 94.8° Wide AOV
- Excellent Low Light Performance
- 4500msw Depth Rating

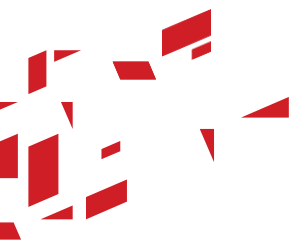
The OE15-100F (CCIR) and OE15-101F (EIA RS170A) standard definition, high resolution monochrome cameras have been designed primarily for use in subsea environments and are ideally suited to mid-water navigation tasks and general observation including manipulator and tooling tasks, construction and drill support applications.

The OE15-100F/101F cameras offer both exceptional low light sensitivity and an extremely wide AOV (94.8°). The water corrected optical arrangement minimises distortions and aberrations and the video image will appear in focus from 300mm in front of the port to infinity; making the OE15-100F/101F an excellent choice for both navigation and general observation applications.

Packaged within a robust 4500msw depth rated titanium alloy housing the OE15-100F/101F provides a standard definition composite video signal output via the Burton 5506-1508 connector or customer specified external connector.

The OE15-100F/101F is supplied in a rugged transit case with a hand held infra-red remote control which has been intuitively designed for ease of use.

For further information, email  
[camera.sales.uk@imenco.com](mailto:camera.sales.uk@imenco.com)



## Applications

- Mid-Water Navigation Tasks
- General Observation & Situational Awareness
- Drill Support Tasks
- Manipulator & Tooling Tasks

# OE15-100F/101F

## Technical Specifications

Performance	
Horizontal Resolution	560 TVL/PH (OE15-100F) 570 TVL/PH (OE15-101F)
Maximum Scene Illumination	Greater than 100,000 lux
Minimum Scene Illumination	0.0005 lux at 100mv video
Signal to noise ratio	>50dB (weighted)
Electrical	
Scan Standards	625 lines 50 Hz CCIR (OE15-100F) 525 lines 60 HZ EIA RS170A (OE15-101F)
Sensor Elements	752 (H) x 582 (V) (OE15-100F) 768 (H) x 492 (V) (OE15-101F)
Video Output	1V pk-pk composite video into 75Ω
Power Input	16 - 30 VDC, 220mA
Optical	
Lens	4mm to 12mm varifocal, F1.2
AOV in water	Horizontal: 75.9° Vertical: 56.7° Diagonal: 94.8°
Iris Control	Automatic
Focus Range	300mm to infinity, fixed
Water Compensation	Concentric Dome Port
Mechanical	
Dimensions	Diameter: 82mm (main body), 89mm (front end) Length: 191mm (excl. connector)
Weight	In air: 2.15 Kg In water: 1.2 Kg
Housing Material	Titanium alloy 6AL/4V ASTM B3 48
Connector	Burton 5506-1508 or customer specified
Environmental	
Operating Depth	4500 msw (other depth rated housing options available)
Temperature	Operating: -5 to 40°C Storage: -20 to 60°C
Shock	30G peak acceleration, 25ms half sine duration, on all three axes
Vibration	10G, from 20 to 150HZ on all three axes
Electromagnetic Compatibility	BS EN 61000-6-3: 2007 Emission and BS EN 61000-6-1: 2007 Immunity

oe15100F\_Datasheet\_RevA

