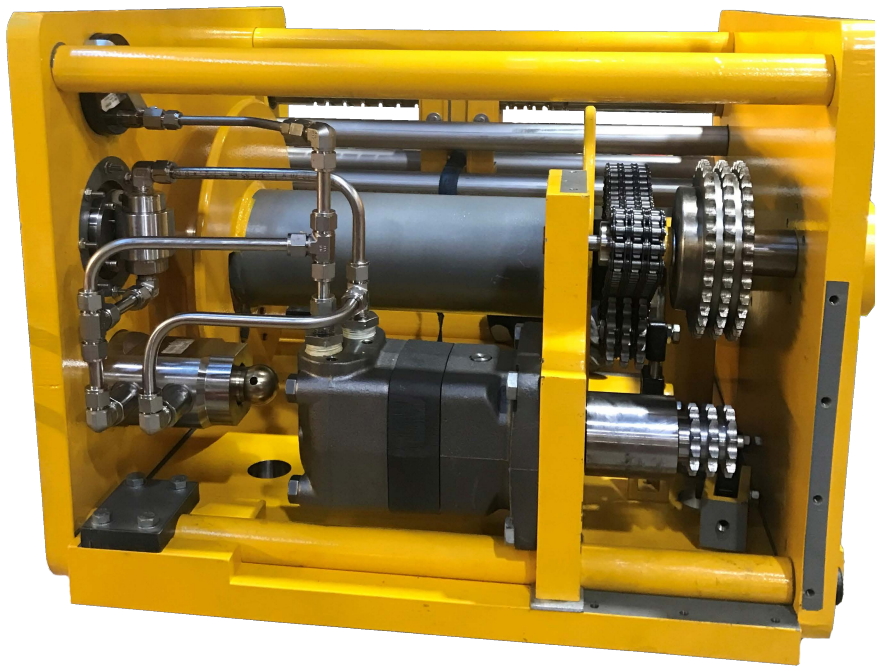


15Te Subsea Winch



Intended for offshore
subsea pulling operations
by use of ROV

The winch incorporates "API 17 D class 4 - vinger" fastened to the bottom plate for docking of the winch. The product is robust, compact and easily maintained. The winch drive is supplied by an orbital hydraulic motor & drive chain system.

For further information, email
commercial@imenco.com

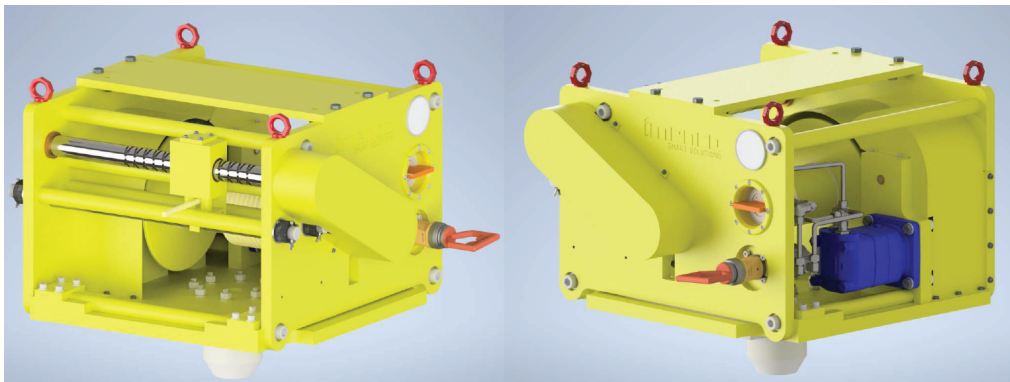
15Te Subsea Winch

The winch is operated locally and is powered hydraulically from an external HPU supplied by ROV via a quick acting coupling live hot stab. A subsea ball valve is included in a ROV valve bucket for routing of hydraulic fluid flow between the hot stab receptacle and the hydraulic motor.

The single drum is fabricated from steel and is supported by 2 axial bearings mounted into the end frame at one end, and onto the drum at drive end. The drum can be rotated 360 degrees for a 15Te line pull in a horizontal plane. The rope is guided through a block for controlled spooling onto the winch drum. It is designed to withstand rough operations in any offshore environment.

Features

- Reliable compact and modular design using standardized and exchangeable components
- Long service and maintenance intervals
- Low cost
- All structural components are painted to norsok M501
- Designed for ROV operations



Model	Capacity	Overall Dimensions L x W x H (mm)	Weight in Air (kg)	Surface Treatment
Single Drum Subsea Winch	15Te	830x925x780	695	Norsok M501

Hydraulic Motor	Motor Inlet Pressure	Motor oil flow = Q	Female Hot Stab	Hot Stab Pressure Rating
Axial Piston	210 Bar (cont)	200 l/min (cont)	43mmØ	690 Bar

Drum Material	Drum Dimensions (mm)	Flange Ø (mm)	Documentation
S355	427 L x 150 core Ø	380	COC + Operation & Maintenance Manual + Load Test Certificate

For further information, email
commercial@imenco.com