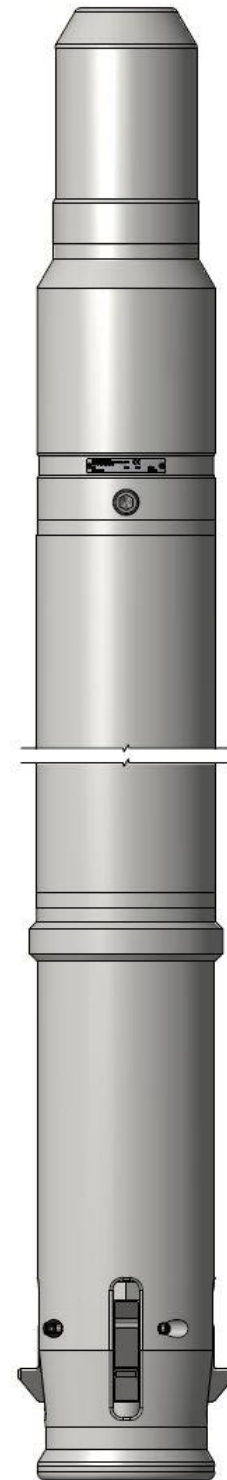


Anchor Releasable Guidepost - GPAR

Standard receptacles are foreseen to be welded to the subsea structure

- Different diameters of the Guide Post Body and length are available
- Special dimensions can be calculated to match required length and load
- Interface towards standard Imenco Guideline anchor at top
- Requires an Extended Anchor to operate the locking mechanism towards the Receptacle
- Extended Anchor for stabbing and release
- Standard or Standard Slimline Anchor may be used for Guide Wire
- Anchor for lifting shall have either Safety Sleeve or Safety Clip

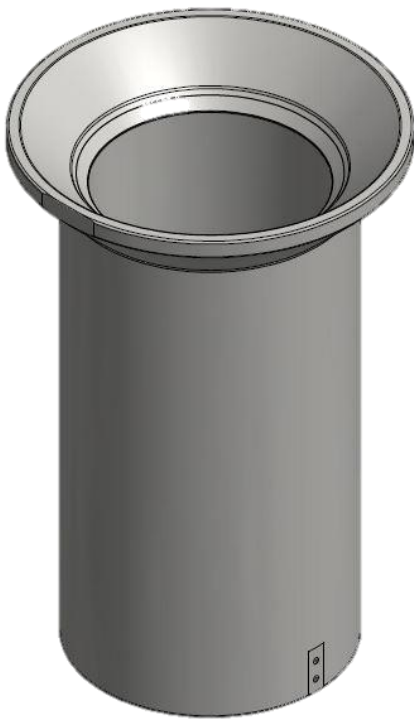


For further information, email
commercial@imenco.com

Anchor Releasable Guidepost - GPAR

Accessories for anchor releasable guidepost

- Extended Anchor for stabbing and release
- Standard or Standard Slimline Anchor may be used for Guide Wire
- Anchor for lifting shall have either Safety Sleeve or Safety Clip



Receptacle for anchor-releasable guidepost



Extended anchor



Standard slimline anchor



Standard anchor