

Guidewire & Lifting Anchors



Guidewire Anchors are supplied with a shear-pin, protecting the equipment

- The anchors have different features and load capacities
- The anchors are available with different tops, for shackle connection or wire socketing
- No shear-pin on Lifting Anchor
- The anchors can be secured against accidental release during operation by means of:
 - Safety Sleeve
 - Safety Clip

For further information, email
commercial@imenco.com

Guidewire & Lifting Anchors

Pad Eye for shackle connection



Socket for potting of wire

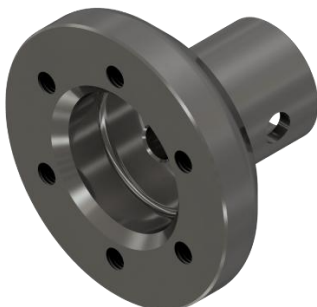


For
Standard Guide
Wire Anchor
&
Lifting Anchor



For
Slimline Guide
Wire Anchor

Mounting Flange / Adapter



Safety Clip for Release Sleeve

