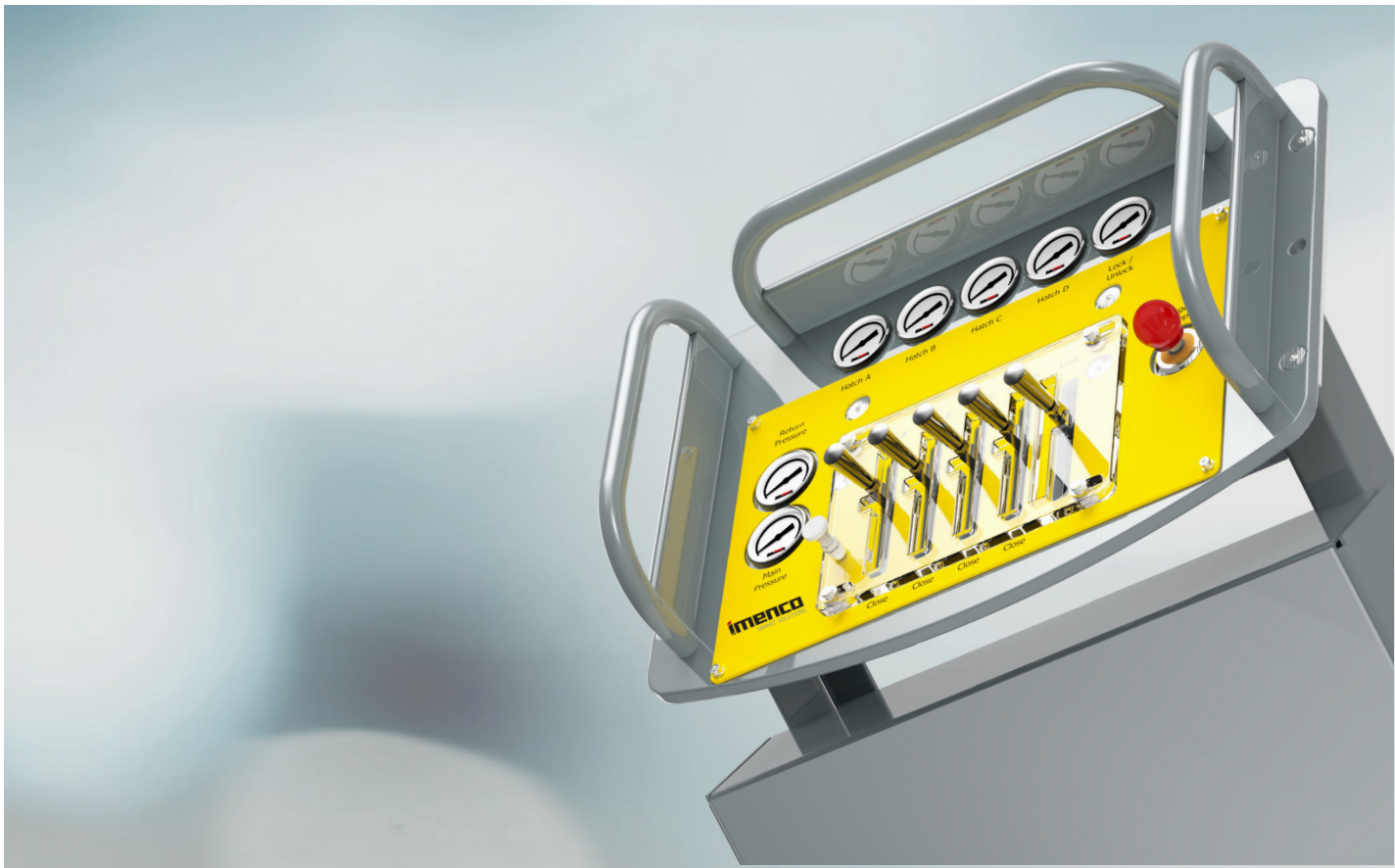


Control Panel



For remotemachine
operation, eitherby use of
hydraulic, pneumaticor
electric signals

The Control Panel is mainly used in workshops and on drill floors. We have various types of control panels, readily adapted to costumer needs. our control panels are designed with regard to safety, ergonomic and the environment.

Control Panel

Advantages

- Panel for hydraulic, pneumatic and/or electrical control valves
- Easily designed for functions required
- Hydraulic emergency stop valve (optional)
- Mechanical handle lock (optional)
- Protection cover
- Oil drip tray
- Text / labelling engraved according to customer`s specifications
- Working pressure up to 690 bar
- Connection plate with labels for easy connection
- Lifting points for handling



MO102167



MO109259



MO111212 With protection cover